



Copyright © 2017, Advance Software Limited. All Rights Reserved.

Document version : 0.95

Important Warning

**Please read carefully before using
this software.**

Some people are susceptible to epileptic seizures or loss of consciousness when exposed to flashing lights or light patterns in everyday life. Such people may have a seizure while watching television images or using some computer software. This may happen even if the person has no medical history of epilepsy or has never had an epileptic seizure. If you or anyone in your family has ever had symptoms related to epilepsy (seizures or loss of consciousness) when exposed to flashing lights, please consult your doctor prior to using this software. We advise that parents should monitor the use of this software by their children. If you or your child experience any of the following symptoms: dizziness, blurred vision, eye or muscle twitches, loss of consciousness, disorientation or any involuntary movement or convulsion whilst using this software, discontinue use immediately and consult your doctor.

TABLE OF CONTENTS

Introduction

System Requirements

System Preparation

Software Installation

Getting Started

User Interface

Control Summary

Selection Mode

Observation Mode

Favourites

Browser Customization

Introduction

Thank you for your interest in Infinity, the world's first mainstream virtual reality 3D web browser.

Infinity fuses leading edge technologies from the fields of real-time 3D computer graphics, data compression and web navigation to create a product with an incredibly unique and contemporary look and feel.

Infinity enables you to enter and explore exciting new interactive 3D websites, the possibilities of which have yet to be fully explored.

System Requirements

Infinity requires a computer system with sufficient power and functionality to run correctly. If your computer system does not meet the minimum recommended specification (below), the software may not run, may run slowly, be unresponsive, unstable, or may exhibit visual flaws.

Operating System	Windows 7, 8, 8.1 or 10
CPU	Intel Pentium i5 or better. (or compatible equivalent)
Memory	At least 4 GB
Graphics Processor	DirectX 11 compatible GPU.
Network	Broadband Internet connection recommended
Storage	200MB available disk space

Important Note

Complex 3D websites will require a computer system that is more powerful than the specification above. Infinity places no limits on the complexity of 3D websites, so you may find some sites run too slowly on your computer. If your computer is not powerful enough to process the website, either upgrade the computer, or avoid that website.

System Preparation

Your PC must be correctly configured in order for Infinity to function correctly.

Prior to installing Infinity :-

1. Ensure your computer meets the minimum system requirements.

2. IMPORTANT:

Ensure your display driver is up to date.

Out of date display drivers are the most common cause of system incompatibility problems encountered when running real-time 3D applications. Details of how to update your display driver can be found on your equipment manufacturer's website.

3. Similarly, please ensure your audio equipment (sound card or motherboard audio processor) device driver is up to date. Details of how to update your audio driver can be found on your equipment manufacturer's website.

4. We recommend that you install the latest operating system service pack and all recommended critical updates. You can use the update facility of your operating system to check your system is up to date.

Software Installation

Installing Infinity is easy.

1. If you have an Infinity CD, insert it into your computer's CD/DVD drive, the installation process should begin automatically.
2. If you have downloaded Infinity from the Internet, run the downloaded install package.
3. Follow the on screen instructions to install the software.
4. Connect to the Internet.
5. Double click on the Infinity desktop icon



or select Infinity from the **Start** menu.

Getting Started

If you're using a compatible virtual reality headset and/or joypad controller, ensure they are connected, configured and working properly. This equipment is optional.



Connect to the Internet, then left mouse button double click on the Infinity icon on your computer's desktop or select the Infinity entry from your computer's desktop **Start** menu.

If your system is correctly configured, Infinity should start.

Your computer's display should look similar to the image in figure 1 (next page). If this is not the case, verify that you have correctly followed all steps in the system preparation section and ensure that you have a live Internet connection.

You are now ready to begin surfing the virtual reality 3D web.

If you are familiar with the control system of 2D web browsers and that of 'first person' video games, you should be able to get to grips with Infinity in minutes. If not, it should not take too much longer.

User Interface

The Infinity user interface is very similar to that of other web browsers. Those familiar with such products should be able to identify the controls and begin using Infinity almost immediately.

Several user interface themes are available, one of which is shown on the following page. You can select alternate themes by selecting the preferences toolbar icon (6), then selecting one of the other themes. Experienced 3D designers can design their own themes in 3D Studio Max or Blender.



Figure 1 : Infinity in action.

Key

1. The favourites icon : Click to open the favourites menu.
2. The back icon : Return to the previous location in your history.
3. The forwards icon : Visit the next location in your history.
4. The refresh icon : Reload the current content.
5. The print icon : Print the current view to your default printer.
6. The preferences icon : Select to customize the browser's behaviour & appearance.
7. The search icon : Search the Internet for information.
8. The address bar : To visit a known location on the Internet, select the address bar then type in the location you wish to visit. To confirm, press the return key or press the go icon.
9. The load icon. Load the address currently in the address bar (or just hit return).
10. Window controls – minimize and close.



Figure 2 : Selecting an entry from the favourites menu.

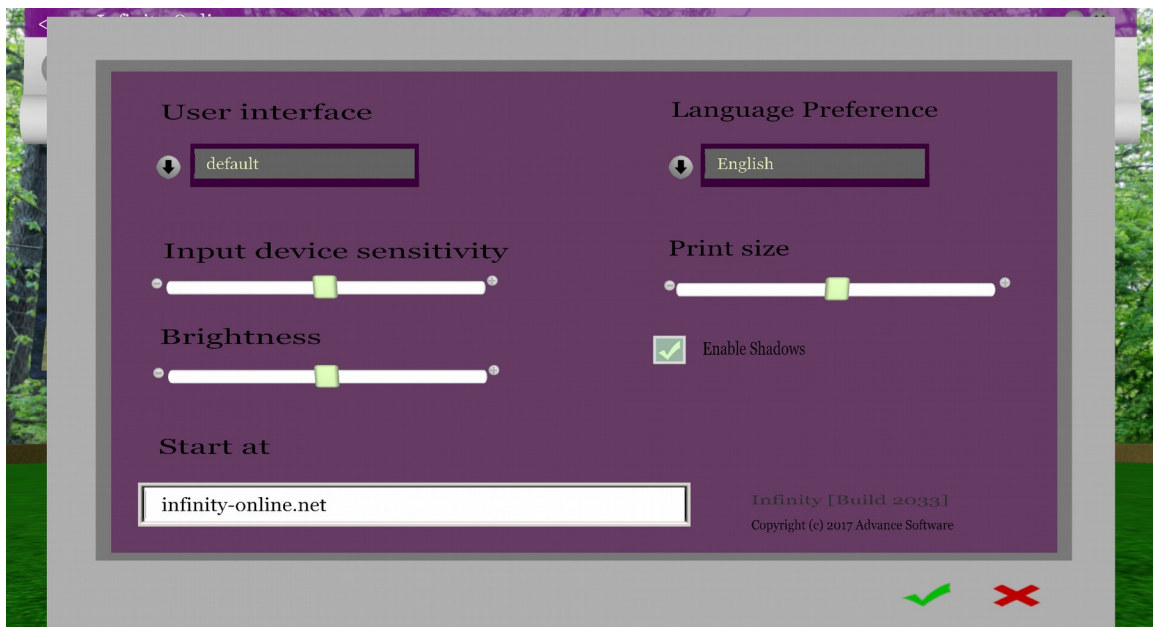


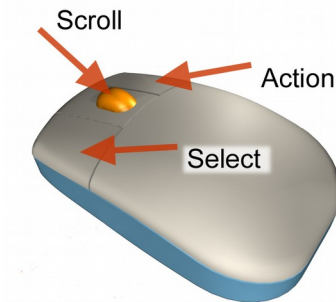
Figure 3 : The preferences screen.

Control Summary

Infinity can be controlled using a mouse, keyboard and a joypad.

Mouse

Mouse input has two modes of operation - selection mode and observation mode. You can toggle between the two at will using the right mouse (action) button.



Selection Mode

Selection mode is used for interacting with a website and the user interface. In selection mode, you interact with the website and user interface by moving a cursor around the screen. Press the left mouse button to interact with the website and user interface.

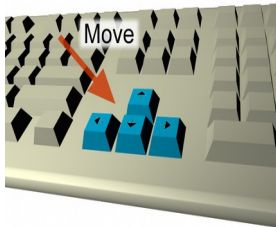
A short 'click' of the right mouse button (the 'action' button) is used to toggle between selection mode and observation mode. A long 'press' of the right mouse button is used to zoom, frame or return inspectable content.

The mouse scroll wheel can be used in selection mode to scroll webpage content.

Observation Mode

Observation mode is used to look and move around a 3D website. Moving the mouse enables you to adjust the viewing angle. Clicking the right mouse button switches back to selection mode - the cursor reappears. Note that some 3D web zones (such as the Welcome carousel) may restrict movement. The mouse scroll wheel can be used in observation mode to move backwards and forwards.

Keyboard



Press the up and down cursor keys to move forwards and backwards in a 3D website zone. The left and right cursor keys enable you to move sideways.

Joypad : Xbox 360, Xbox 1, or Compatible Controller



Figure 4 – controller support

Key :

- 1 – move cursor
- 2 – move around 3D web zone
- 3 – look around
- 4 – forward
- 5 – backwards
- A – select (same as left mouse)
- B – action (same as right mouse)

Favourites

As you explore the web, you will find places you'd like to return to. You can bookmark these locations in the favourites menu. When the favourites icon is selected, the favourites menu opens, displaying your bookmarked locations. Notice that the menu can also contain bookmarks imported from some other browsers, if they are installed on your computer.

Selecting Favourites

Open the favourites menu by selecting the favourites icon. The current entry (under the cursor) is highlighted. To select that entry, press the left mouse button. If the selected entry is a group, the group's sub-menu is opened. To dismiss a menu without selecting anything from it, press the select button elsewhere (somewhere off the menu).

Editing Favourites

You can add, remove and modify entries in the favorites menu.

Adding Favourites

To add a new favourite, open the menu where you wish to add it, then press the action button (right mouse) to open the utility menu. Select "add new entry". A dialog box will open where details of the new entry can be entered.

Deleting Favourites

To delete an entry from the favourites menu, open the menu that contains the entry you wish to delete. Move the cursor over the entry, then press the action button (right mouse) to open the utility menu. Select **delete** from the menu and confirm, if you are sure you wish to delete the entry.

Modifying Favourites

To modify an existing favourite, open the menu that contains the entry you wish to modify. Move the cursor over the entry, then press the action button (right mouse) to open the utility menu. Select modify from the utility menu, then modify the entry as desired.

Browser Customization

You can adjust the appearance and behavior of the browser from the preferences control. To open the preferences control, select the preferences icon from the toolbar. From here, you can adjust brightness, change the appearance of the browser, select your desired home page and perform other customization tasks.



Figure 5 : Infinity running with the alternate 'classic' theme.